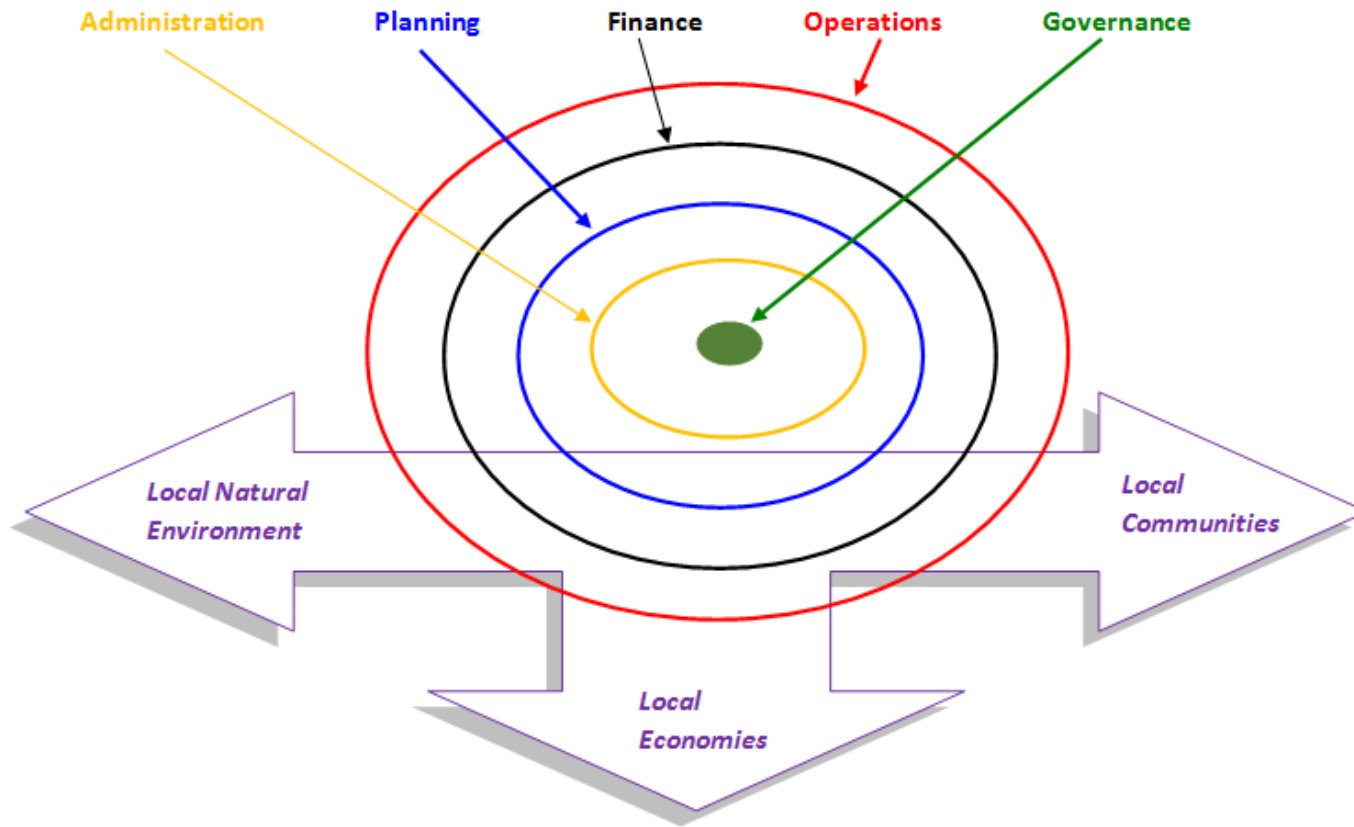


# **Amador Calaveras Consensus Group (ACCG) Goals, Plans and Achievements**

Jan Bray & Pat McGreevy  
Amador & Calaveras Counties

**ACCG Organizational Functions and the Triple-Bottom-Line**



# ACCG Mission

The Amador Calaveras Consensus Group is a community-based organization that promotes:

- Fire Safe Communities
- Healthy Forest Watersheds
- Sustainable Local Economies

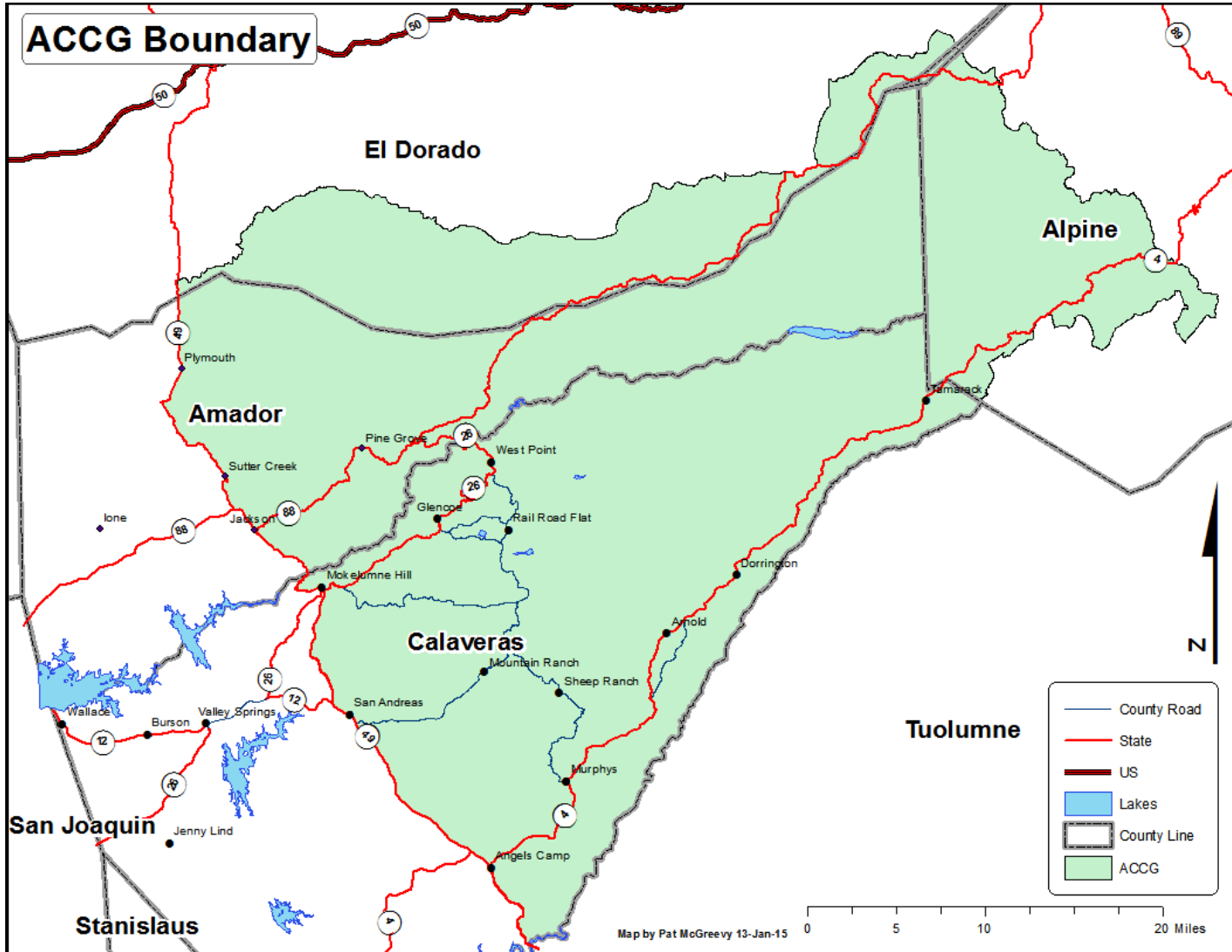
Projects are designed to provide three local benefits:

- Ecologic Benefits- Fire & disease resilient forests
- Economic benefits- Jobs, CoGen plant, forest products...
- Social benefits- Recreation, education, docent led tours...

# ACCG Boundary

All-lands lands east of Hwy 49

Calaveras, Amador and parts of Alpine and El Dorado Counties



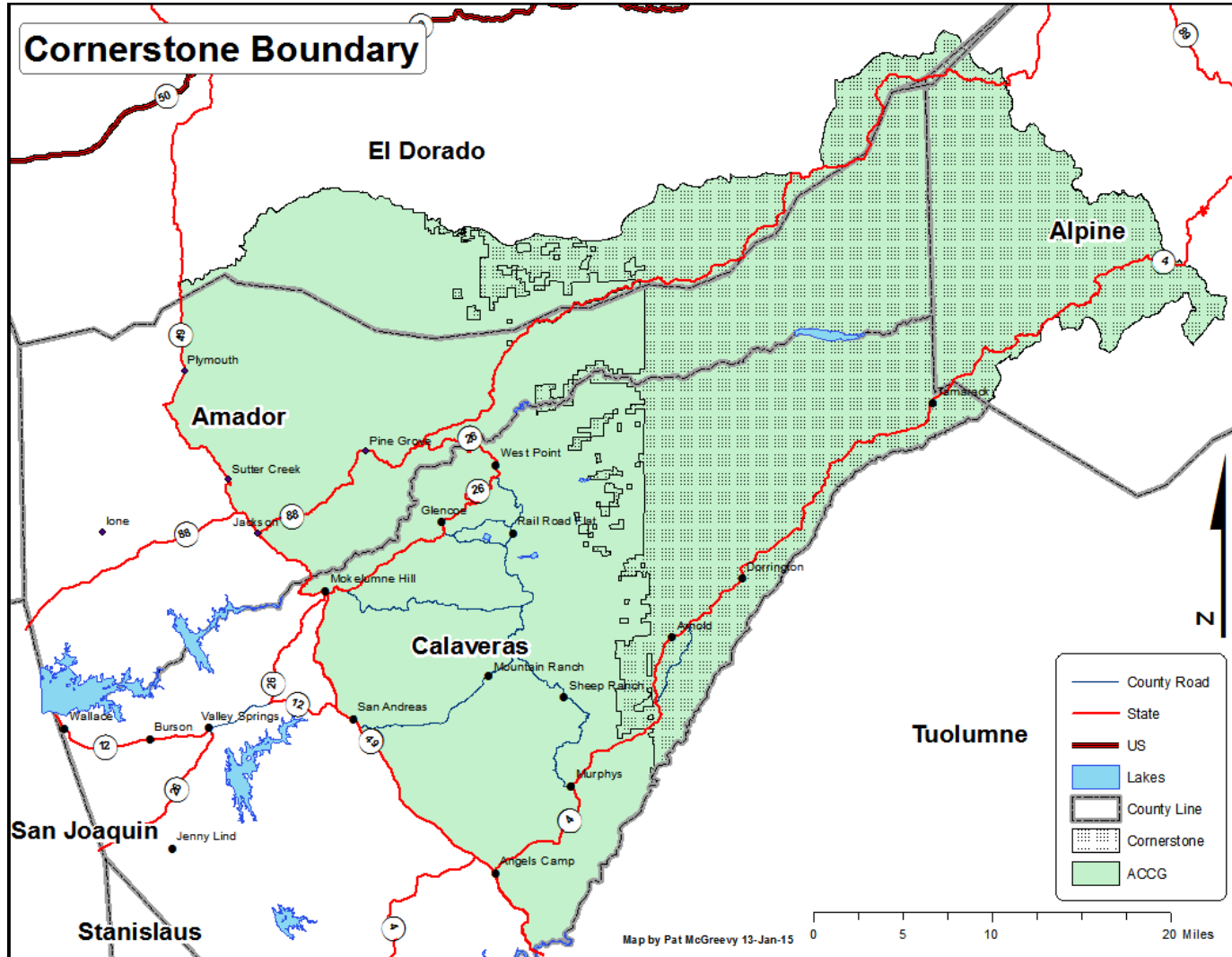
# ACCG's Cornerstone Project

## Amador and Calaveras Ranger Districts

- Project focuses on the restoration of 391,000 acres in the Mokelumne River headwater area over ten years.
- In 2012, Cornerstone was funded with \$17,000,000 under the USDA 'Collaborative Forest Landscape Restoration Program' that encourages environmentalists, industry, USFS and local communities to work together to build healthier forests and contribute to local economies.
- Projects include fuels reduction, reforestation, post-fire salvage, meadow restoration, erosion control, invasive plants, recreation ...

# Cornerstone Boundary

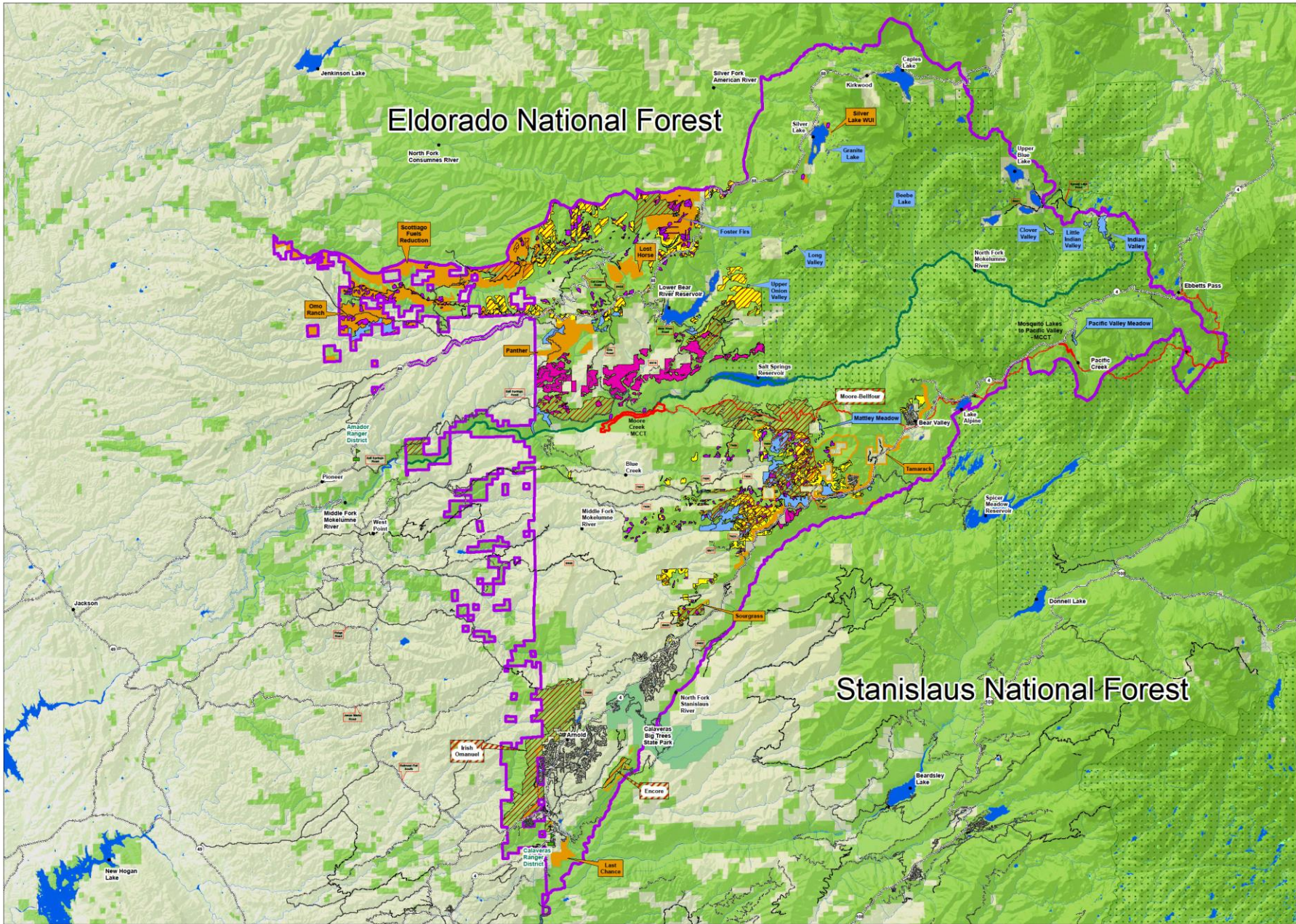
Private and public lands east of Hwy 49  
in Calaveras, Amador and parts of Alpine and El Dorado counties





# Eldorado National Forest

# Stanislaus National Forest



0 5 10 Miles



Scale = 1:90,000  
NAD 1983 UTM Zone 10N  
Autumn Olsen

## ACGG Cornerstone Project Area & Treatments

- Prescribed Fire
- Habitat Restoration
- State/Federal Land
- Fuels Reduction
- Precommercial Thinning
- Wilderness Area
- Power & Ramsey Fire
- Commercial Thinning
- Amador RD Calaveras RD Boundary
- Private Land
- MCCT\_Draft
- Cornerstone Boundary



## How does the ACCG define “Local”?

- Projects in the Calaveras Ranger District – local is considered to be a Contractor based in Amador, Calaveras, Alpine and Tuolumne counties.
- Projects in the Amador Ranger District – local is considered to be a Contractor based in Amador, Calaveras, Alpine and El Dorado counties.



# ACCG Participants in the Operations Working Group

- **CONTRACTORS:** • Bob Noble & Sons • Blackjack Enterprises • Bordges Timber, Inc. • Burgess Paving Company • Buena Vista Biomass Power • Calaveras Healthy Impact Product Solutions (CHIPS) • Greers Tree Service • JD Jones Trucking • Rocky Mountain Landscape • Sarott Construction • Scott Zellers Trucking and Excavating • Sierra Pacific Industries • Sluitte Timber Company • Smith's Grinding • The Welcome Home Workshop • Vicini Brothers Green Material Recycling • Woodland Expansion, Inc
- **CONTRACT ADMINISTRATION:** • USFS Amador Ranger District • USFS Calaveras Ranger District • USFS El Dorado National Forest • USFS Region 5 Regional Office • USDI Bureau of Land Management – Mother Lode Field Office
- **CONTRACT CONSULTANTS:** • California Forestry Association • Foothill Conservancy • Heissenbuttel Natural Resource Consulting • Hoffman Consulting • Bray Consulting • Small Business Administration • Sierra Institute for Community and Environment

# CHIPS

## Calaveras Healthy Impact Product Solutions, 501(c)(3)

- Founded in 2004 to put people to work:
  - Forest & meadow restoration
  - Watershed stewardship
  - Cultural site restoration
  - Fuel Reduction
    - 100' home defensible space
    - Door to door chipping
    - WUI Fuel break construction
- Based in West Point and serving Calaveras and Amador Counties;
- Purchased trucks, chippers and hand tools from startup grants;
- Created 25 jobs including members of the Miwok community.
- Now a self-sustaining non-profit



# CHIPS' Product Yard in Wilseyville



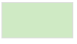







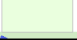
## Biomass energy project

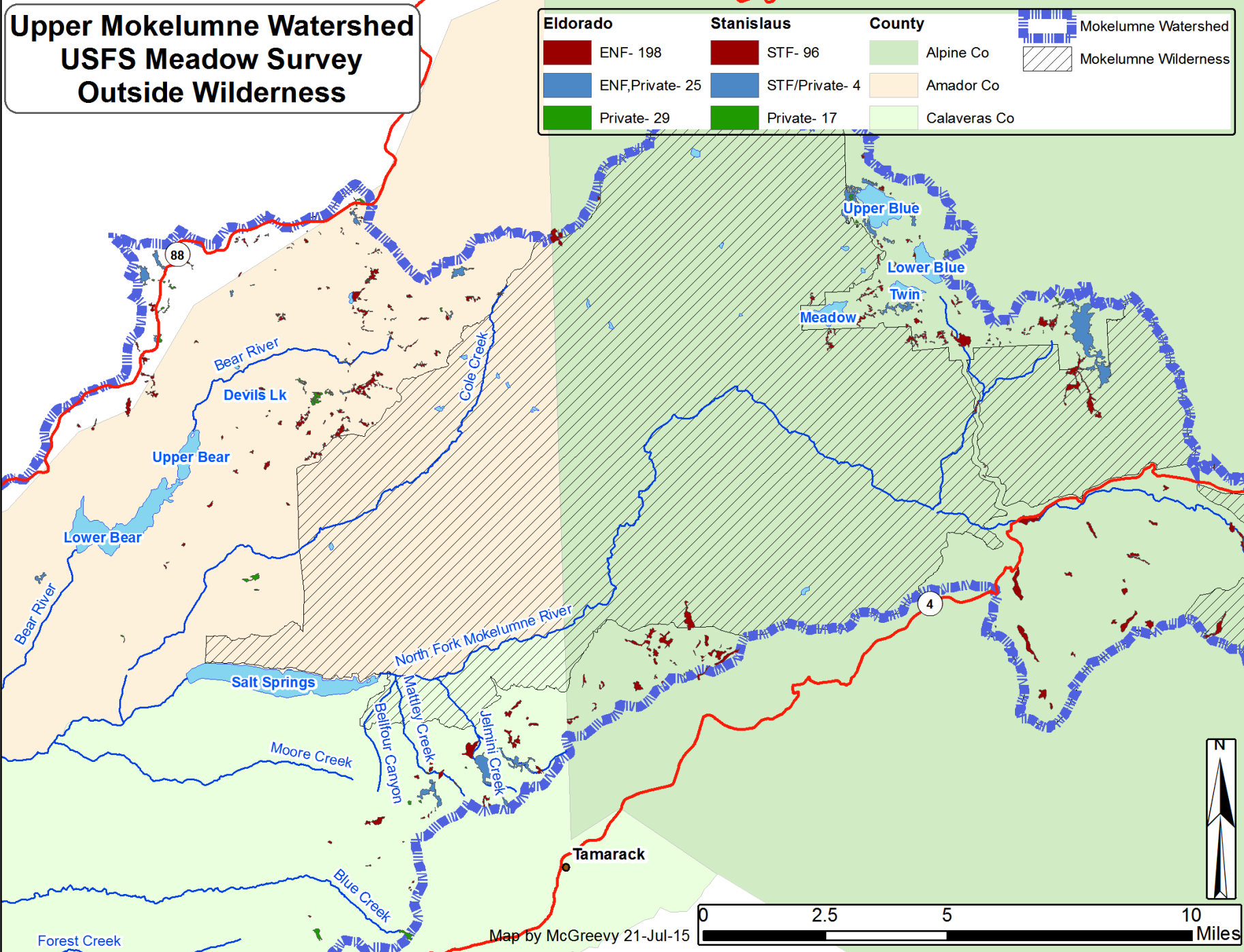
- Use 24,000 BDT of biomass per year from forest, Ag & private sector inside a 50 mile radius
- Generate heat for drying feedstock
- Generate 3 MW of electricity (3,000 homes)
- Produce Biochar, a byproduct of the gasification process, to be sold as a soil amendment (2,550 tons/year)
- Expected to go online in 2017
- Create ~16 jobs

## Other products

- Small log mill
- Posts
- Poles

# Upper Mokelumne Watershed USFS Meadow Survey Outside Wilderness

Eldorado	Stanislaus	County	Mokelumne Watershed
 ENF- 198	 STF- 96	 Alpine Co	 Mokelumne Watershed
 ENF,Private- 25	 STF/Private- 4	 Amador Co	 Mokelumne Wilderness
 Private- 29	 Private- 17	 Calaveras Co	



Map by McGreevy 21-Jul-15

## Area of Meadows in Mokelumne Watershed by Ownership

Acres	ENF + ENF/Private	STF + STF/Private
<5	184	59
5-9	16	15
10-19	12	12
20-29	4	6
>30	7	8
Total	223	100

Fine print:

Only one meadow is currently being restored, Indian Valley.

A handful of meadows are in the planning stage, Foster Firs, Mattley, Hay, Horse, Thompson, Black Springs...

Mattley has mixed ownership, STF/Private, that complicates environmental studies and funding.

There is a need to survey the remaining 200+ meadows and prioritize them for restoration.



**Caples Meadow in Drought Year Three  
Built and Maintained by American Beaver  
Caples Creek, Lake Margaret Trail, Hwy 88, 9-Sep-14**







# Meadows in Mokelumne Watershed

## American Rivers Score Card

Meadow Name	Bank Height	Gullies outside Main Channel	Bank Stability	Vegetation Condition	Bare Ground	Encroachment
Meadows rated by Starrett and McGreevy 2015						
Upper Onion Valley	2	2	2.5	ND	4	2
Deer Valley	4	4	3	ND	1	1
Unnamed Meadow off 08N03F	4	4	4	ND	2	2
Meadows rated by American Rivers 2012						
Pacific Valley	1	2	1	2	1	1
Indian Valley	1	1	2	2	1	2
Tryon Meadow	2	2	2	2	1	4
Little Indian Valley	2	1	3	3	2	3

1- heavily impacted  
ND- not determined

2 – moderately impacted

3- slightly impacted

4- natural condition



# Upper Onion Valley Meadow-Drought Year Four

Area= 6.99 ac; Lower 1/3 wet with water flow; Upper 2/3s dry





# Upper Onion Valley Meadow-Drought Year Four

Cole Cr; 4' cut, unstable bank; High water table



7/17/2015

Facing meadow head above moraine



# Upper Onion Valley Meadow-Drought Year Four

## Dry upper meadow; Cut & piled conifer saplings



7/17/2015

Facing meadow head



# Upper Onion Valley Meadow-Drought Year Four Head cut



7/17/2015

Facing meadow head

# Upper Onion Valley Meadow-Drought Year Four Restoration Considerations for ACCG Planning Group

- USFS specialists confirm restoration needs and consider following remediation.
  - Plug and pond head gully
  - Channel remediation for bank stability and head cuts
  - Remove invading conifers
  - Install wildlife friendly fence until restoration is successful
  - Develop off-riparian water points for livestock and wildlife
  - Decommission 200 yard road to nowhere at head of meadow
  - Tadpoles observed- verify if threatened/endangered species
- Secure funding for detailed planning and NEPA?
- What about the other 200+ meadows in the watershed?

# Forest Restoration

## Fire & Water

### Wildfire Risk

- Woody debris on forest floor fuels surface fire
- Tall brush lifts fire into the canopy
- Crown fire spreads throughout dense canopy

### Wildfire Prevention

- Remove surface and ladder fuels
- Reduce tree density to open the canopy

### What about water?

- Brush & trees pump ground water & release it to atmosphere
- **Mature conifer pump 75-100 gallons per day**

**So, fire fuel reduction lowers risk of ignition and fire intensity while conserving water!**



# Forest Restoration (GTR 220)

Regular spacing of “leave” trees in a defensible fuel profile zone.





# Forest Restoration

Mokelumne Canal Road 5, BLM land, Glencoe, Calaveras Co





# Forest Restoration

Neglected pine plantation, Windy Point, BLM land, Glencoe





# Forest Restoration- An All Lands Issue

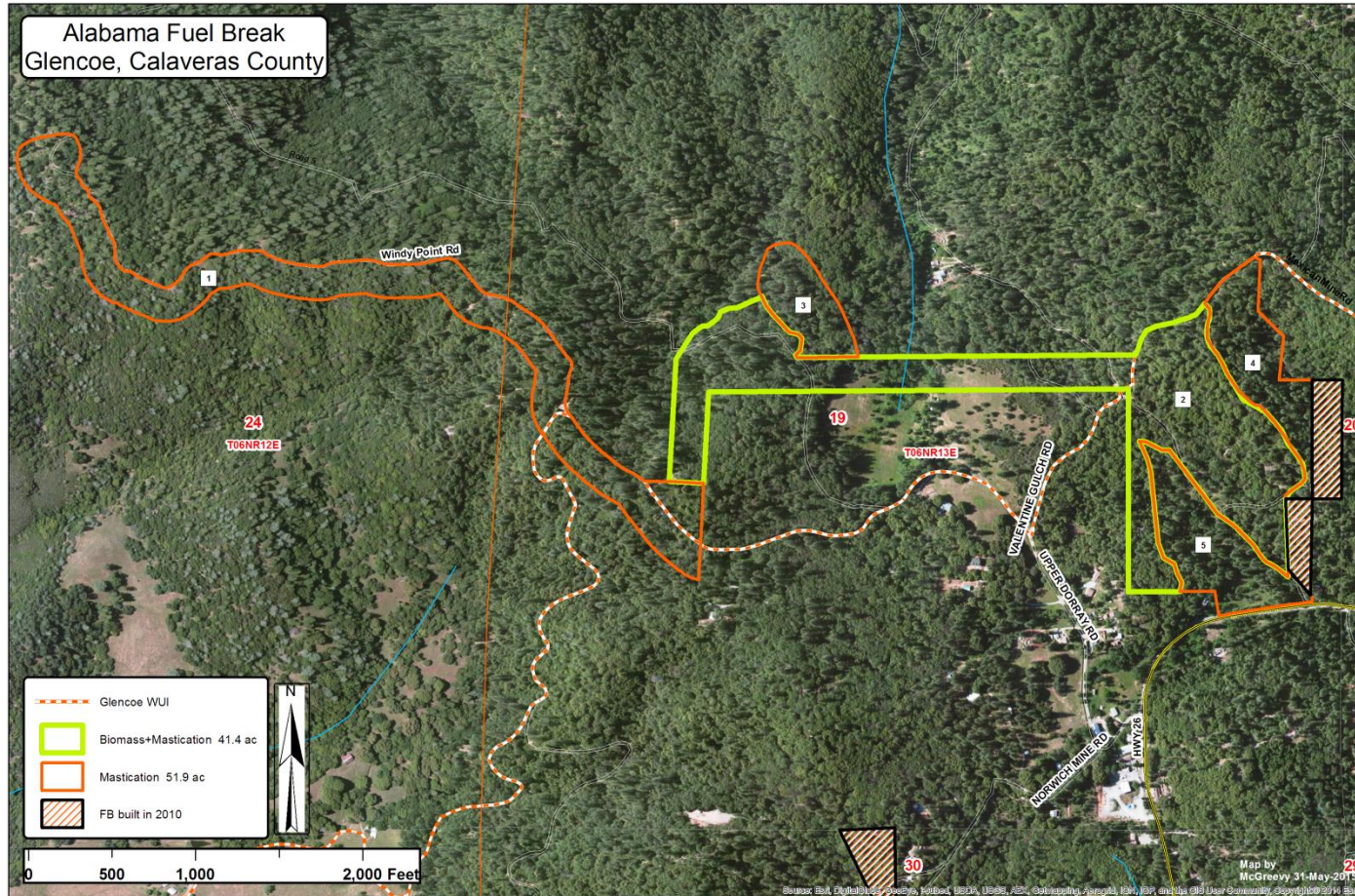
WUI fuel break on 5 ac of private land in Glencoe (23-Jul-05)





# Forest Restoration- An All Lands Issue

## Alabama Fuel Break on BLM land along Glencoe WUI



# Take Home Message

## Forest Restoration is a Winner

- Reduces risk of wildland fire
- Increases water yield
- Increases timber production
- Creates jobs

## Big Problem - Little Capacity

- USFS and BLM have been underfunded for generations;
- \$17 million grant to the USFS is a start, enough to cover 13% of Mokelumne Watershed!
- Faced with LONG DROUGHT and BIG BURNS California has created the \$ billion Prop 1 fix.
- BUT, federal agencies are ineligible for Prop 1.
- So, our USFS and BLM neighbors need fiscal agents to secure funding for the watershed.
- Listen carefully to their pitch.